



DP-12

OWNER'S MANUAL

TABLE OF CONTENTS

A. Safety Information and Warnings	3
B. Overview	
Description	6
Nomenclature	6
Ammunition	7
Sling Mounting.....	7
C. Operating Instructions	
Safety.....	8
Loading Magazines.....	8
Chambering from Magazine.....	9
Manual Chamber Loading.....	9
Firing.....	10
Unloading.....	10
D. Disassembly	
Loosen Stock Recoil Assembly.....	11
Removal of Grip Assembly.....	12
Removal of the Bolts.....	13
E. Assembly	
Insertion of the Bolt.....	15
Lower Grip Attachment	16
F. Choke Tubes	
Removal and Installation of choke tubes	17
G. Cleaning and Maintenance	
Maintenance	18
Lubrication	18
H. Troubleshooting	
Troubleshooting	19
I. Service, Repair and Warranty	20
Parts Schematic	22

A. SAFETY INFORMATION AND WARNINGS STATEMENT OF LIABILITY

This firearm may be classified as a dangerous weapon and is surrendered by Standard Mfg. with the understanding that the purchaser assumes all liability resulting from unsafe handling or any action that constitutes a violation of any applicable laws or regulations. Firearms can cause serious injury and death. Safety must be the prime consideration of anyone who handles firearms.

READ THESE INSTRUCTIONS AND WARNINGS CAREFULLY, BE SURE YOU UNDERSTAND THESE INSTRUCTIONS AND WARNINGS BEFORE USING THIS FIREARM.

DO NOT PUT HAND IN FRONT OF MUZZLE.

This manual should always accompany this firearm and be transferred with it upon change of ownership or when the firearm is loaned or presented to another person. A copy of the MANUAL is available FREE upon request and can also be downloaded from the internet at: <http://www.standardmfgllc.com>.

Each DP-12 also has a QR code that can be scanned with a smart phone to bring you to an on-line copy of the manual.



ALWAYS LEAVE GUN IN OPEN BOLT POSITION

READ AND CAREFULLY FOLLOW THESE WARNINGS AND INSTRUCTIONS

This Instruction Manual is designed to assist you in learning how to use and care for your **DP-12** properly. Please contact us if you have any questions about it. Failure to follow these instructions may result in improper functioning and serious injury or death.

Only when you are certain you fully understand the Manual and can properly carry out its instructions should you practice loading, etc. with live ammunition. If you have any doubts about your ability to handle or use a particular type of gun safely, then you should seek supervised instruction. Such personalized instruction is often available from gun dealers, gun clubs or police departments. If none of these sources can help you, write to the National Rifle Association, 11250 Waples Mill Road, Fairfax, VA 22030-7400. They will assist you.

The person possessing a gun has a full-time job. You cannot guess; you cannot forget. You must know how to use your firearm safely. **Do not use any firearm without having a complete understanding of its particular characteristics and safe use.**

Remember: There is no such thing as a foolproof gun.

- Only safe gun-handling habits will ensure the safe use of your firearm. This is your responsibility. Accidents are the result of violating the rules of safe gun handling noted below and common sense.
- Before handling a firearm, understand its operation.
- Never accept or pick up a firearm without checking the magazine and the chambers to assure the weapon is empty. Do not trust the extractor to clear the chambers, always look and feel to insure both chambers are empty.
- Always make sure the muzzle is pointed in a safe direction at all times.
- Never point a firearm at anyone or anything you do not intend to shoot.
- Ensure the barrel is free of obstructions prior to firing. Open the action and clear the firearm of all ammunition before checking the barrel of the unloaded firearm.
- Keep your firearm unloaded when not in use. Never keep a loaded firearm in the home or vehicle. Never store a firearm with a cartridge in the chamber.
- Never store firearms and ammunition together, keep them locked up and away from children. Use locking accessories for prevention.
- Never touch the trigger when working the action.
- Never alter any components of your firearm.
- Never take medications, drugs, or alcohol when handling firearms.
- Never load or unload a firearm without assuring the muzzle is pointed in a safe direction.
- Never load a firearm except immediately before shooting.

SAFE GUN HANDLING IS YOUR RESPONSIBILITY

Discharging firearms in poorly ventilated areas, cleaning firearms, or handling ammunition may result in exposure to lead and other substances known to cause birth defects, reproductive harm, and other serious physical injury. Have adequate ventilation at all times. Wash hands thoroughly after exposure. Never discharge a firearm without proper shooting glasses and ear protection. Never shoot at any water surface or any surface where a ricochet can occur. Never shoot until you are sure of your backstop and what lies beyond it. If the gun does not discharge after pulling the trigger, do not change its direction for at least 30 seconds, you could be having a “hang fire”, and the cartridge could go off when you do not expect it. After waiting 30 seconds open the action, remove all ammunition from the magazine and remove the unfired cases from the chambers, while keeping the firearm pointed in a safe direction. Always be aware of other people so that they cannot accidentally walk into the line of fire.

When firing on a target range, be alert and follow the range officer’s commands. Never cross obstacles such as fences or streams with a loaded firearm. Do not allow a firearm to be used by individuals who do not understand its safe operation and the rules of safe gun handling.

WARNING: After firing several rounds, the exterior metal parts of the firearm and barrels get **VERY** hot and can cause severe burns if touched.

Be sure all accessories are compatible with the firearm and that the accessories do not interfere with safe operation of the firearm.

When transporting your firearm, be sure your firearm is unloaded and on **SAFE**.

If you do not understand how to operate your DP-12 or have any questions about their safe handling, please write, call, or email us at:

Standard Mfg.

100 Burritt Street

New Britain, CT 06053

Website: <http://standardmfgllc.com>

Email: info@standardmfgllc.com

B. OVERVIEW

Description

The DP-12 is a dual-magazine 12-gauge pump action shotgun. The bullpup dual magazine feed design provides the operator with a more compact layout, increased total capacity, and with no requirement to switch between two magazines of ammunition.

The DP-12 features positive extraction and ejection, allowing it to be reliably fired in any shooting orientation. Loading and ejection are combined into a single port rearward of the grip assembly under the shotgun, enabling the DP-12 to be fired from both the dominant and non-dominant side.

The DP-12 has an integral MIL-STD-1913 Picatinny rail, located above the barrel and on the forend, that come standard with the DP-12 for mounting accessories. Unloaded, the DP-12 maintains a center of gravity over the grip assembly to facilitate ease of handling.

Nomenclature



Ammunition

The DP-12 is chambered for 12-gauge 3" shells and may safely fire both lead and steel shot. Shells 2-3/4" and shorter are also safe to fire, but anything shorter than 2-3/4" should be thoroughly tested for reliable feeding and ejection. For reference, the chamber gauge and length is indicated on the right side of the receiver of the shotgun.

WARNING: ALWAYS USE SHELLS OF THE CORRECT GAUGE AND LENGTH OR SHORTER. DO NOT USE NON-STANDARD AMMUNITION OR SHELLS WITH PRESSURES EXCEEDING SAAMI STANDARDS. FAILURE TO FOLLOW THIS WARNING MAY RESULT IN SERIOUS INJURY OR DEATH AND DAMAGE TO YOUR FIREARM. FAILURE TO FOLLOW THIS WILL VOID WARRANTY.

Only use commercially available US-manufactured ammunition that meets SAAMI established standards. Inspect your ammunition to make sure it is clean, dry, and in good condition. Never use non-standard, reloaded or damaged shells. Any other ammunition is considered non-standard and its use may void the warranty on this firearm. Standard Mfg. firearms are manufactured from high quality materials. They will provide a lifetime of service if properly maintained. However, all warranties, expressed or implied, are voided and Standard Mfg. will not be liable for property damage or personal injury and consequential damages, if faulty, non-standard, or reloaded ammunition is used in any Standard Mfg. firearm.

Sling Mounting

The DP-12 comes equipped with forward attachment points on the left and right sides of the barrel assembly as well as multiple rear attachment capabilities in the rear of the receiver.

The different sling attachment points on the DP-12 can be used to mount a 1." wide nylon sling.



ALWAYS LEAVE GUN IN OPEN BOLT POSITION

C. OPERATING INSTRUCTIONS

Safety

The DP-12 features an AR type rotary safety located behind and above the trigger on the grip assembly. When the safety is activated, it blocks the sear from releasing and prevents the trigger from being pulled. Please note that the safety will not engage unless the hammer is cocked. The safety is rotated with the right or left thumb until a click is heard and the pointer selects the desired mode “SAFE” or “FIRE”



WARNING: NEVER TOTALLY RELY ON YOUR MECHANICAL SAFETY AS IT CAN FAIL OR UNINTENTIONALLY BE DISENGAGED. YOUR MECHANICAL SAFETY IS NOT A SUBSTITUTE FOR SAFE GUN HANDLING PRACTICES.

Loading Magazines

1. Ensure your muzzle is pointed in a safe direction before loading.
2. Engage the safety by ensuring the pointer is selecting the “SAFE” position.
3. Ensure the forend is not in the rearmost position. If so, move the forend and slide assembly forward. Slide the action closed with chambers empty so that the bolt sled will aid in locating the ammunition.
4. With fingers on the base of the round, insert the round into the loading/ejection port and slide the round into the magazine using your fingers as shown in Figure C-1. The rounds should slide under and should be held in place by the magazine hooks.
5. The magazine hooks must be pulled up to manually release shells from the magazine tubes.



Figure C-1: Loading Shells into the Magazine Tubes

Magazines can be filled simultaneously by using two fingers while the firearm is stable upside down and pointed in a safe direction.

Chambering from Magazine

1. The magazines may be filled to capacity with 7 2 3/4" shotshells in each tube, less rounds may be used, if desired.
2. Pull down the action bar release on the trigger guard and maintain downward pressure to unlock forend. See Figure C-2.
3. Actuate the forend fully rearward and then fully forward to chamber two rounds from the magazine tubes, one in each barrel.
4. The gun is ready to fire with the "SAFETY" on. One round may now be placed into each of the magazine tubes to replace the 2 that have been chambered.

CAUTION: DO NOT HOLD THE FOREND BEHIND THE PICATINNY RAIL. DOING SO WILL SHORT STROKE THE ACTION AND PINCH YOUR HAND.



Figure C-2: Action bar release

Manual Chamber Loading

The procedure for loading a shell directly into the chamber of the DP-12 is different than most other shotguns because of the combined loading and ejection port. To load a shell into the chamber of the DP-12, use the following procedure as a guideline.

1. Ensure your muzzle is pointed in a safe direction before loading.
2. Engage the safety by ensuring the pointer is selecting "SAFE".
3. Pull down the action bar lock and maintain downward pressure to unlock forend.
4. Actuate the forend so that it is about a 1/2" from the rearmost position. Inspect that the shell lifters are down against the top of the receiver and are not blocking access to the chamber.
5. Place a shell or 2 shells in chamber and cycle the action forward to chamber the inserted shells.

ALWAYS LEAVE GUN IN OPEN BOLT POSITION

Firing

1. Load a shell or two shells into the chamber of the DP-12 manually or from the magazine, as instructed above.
2. Aim at the target, taking notice of the target's backdrop.
3. Disengage the safety, rotating it so the pointer selects "FIRE".
4. Place trigger finger into trigger guard.
5. When the trigger is depressed the DP-12 will fire the right barrel. Release the trigger and depress again to fire the left barrel. Cycle the action to eject the empty cases and feed two new rounds from the loaded magazine tube into the chambers.

IF YOU DO NOT RELEASE THE TRIGGER AFTER FIRING THE FIRST ROUND THE SECOND SEAR ENGAGEMENT WILL NOT SETUP

Unloading

1. Ensure your muzzle is pointed in a safe direction before unloading.
2. Engage the safety by rotating the pointer to "SAFE".
3. **ENSURE THAT ALL FINGERS ARE CLEAR OF THE TRIGGER.**
4. Pull down the action bar lock and maintain downward pressure to unlock forend.
5. Cycle action back and forth repeatedly using the forend, loading and extracting live ammunition until the magazine followers are visible and the chambers are empty.
6. When the DP-12 is fully unloaded both magazine followers should be visible from the ejection port and the chamber should be visibly empty.
7. With the forend in its rearmost position, always visually and tactually check the chamber to confirm the firearm is unloaded.
8. To keep the firearm safe, keep action open to the rearward position and insert the locking bracket in front of the forend between the barrels and the magazine tubes. Use the supplied padlock to prevent child access.
9. The rounds in the magazine tubes may be removed manually by lifting the magazine tube hooks. This cannot be done with the forend assembly and bolts at their rearward position. Move the forend assembly forward so the lifters fall to the inside top of the receiver. Pull up on the magazine release hooks to release contained rounds. Always return forend assembly to the rearmost position and inspect that the chambers are empty, both visually and tactually.

D. DISASSEMBLY

For regular maintenance of the DP-12 only cleaning and lubricating will be necessary. In order to remove debris or thoroughly clean and lubricate the action, it will be necessary that you become familiar with its disassembly. The following sections should be followed in sequential order and continued as needed depending on desired maintenance.

WARNING: ALWAYS ENSURE THE DP-12 IS CLEAR OF ALL AMMUNITION BEFORE ATTEMPTING DISASSEMBLY. IF THE DP-12 HAS BEEN FIRED, WAIT A SUFFICIENT AMOUNT OF TIME FOR THE COMPONENTS TO COOL BEFORE ATTEMPTING DISASSEMBLY.

Loosen Stock Recoil Assembly

1. Ensure that the firearm chambers and magazine tubes are completely empty and the muzzle is pointed in a safe direction.
2. Inspect that safety is selecting "SAFE."
3. Access the shoulder screws through the large holes in the recoil pad with an allen wrench and remove the recoil pad assembly with springs. See Figure D-1.



Figure D-1: Removal of recoil pad assembly

4. Loosen the socket head cap screws in the recoil pad shroud at least 1 1/2 turns. See Figure D-2.



Figure D-2: Loosening of socket head cap screws

ALWAYS LEAVE GUN IN OPEN BOLT POSITION

Removal of Grip Assembly

1. Slide forend assembly back to open the action and inspect that chambers and magazines are empty.
2. Inspect pointer is selecting “SAFE” mode.
3. Remove the rear assembly pin located at the rear of the receiver just in front of the recoil pad shroud. See Figure D-3.
4. On each side of the firearm remove the socket screws at the front of the receiver just below the magazine tubes. See Figure D-4.
5. Adjust the position of the forend rearward so that the front socket screw of the lower grip assembly can be accessed through the hole in the forend just in front of the lower 3 slots in the forend. Loosen and remove the screw completely. See Figures D-5 and D-6.



Figure D-3: Removal of rear assembly pin



Figure D-4: Remove socket screws



Figure D-5: Loosen and remove screws



Figure D-6: Remove screws

6. Remove the grip assembly by lifting the rear of the assembly sliding angularly against the back of the receiver as shown in Figure D-7.



Figure D-7: Remove grip assembly

7. It is best to slide the forend assembly forward. Begin removing the assembly by rocking the front of the grip assembly away from the magazine tubes slightly. Then slide the grip assembly away at an angle parallel to the rear of the receiver. Return screws and pin to their original locations. See Figure D-7 and D-8.



Figure D-8: Pull rear away from aluminum action.

8. Grip the lower assembly as shown in Figure D-8 and pull front up slightly.

Removal of the Bolts

1. With the grip assembly removed the bolt retainer plate may be removed to access the bolt sled and bolts. Remove the flat head socket screws on each side (See Figure D-9) of the receiver to the rear of the irregular “U” shaped notch in the receiver bottom. Slide the black anodized bolt retainer plate approximately 1/4” forward so that its rear corners are free from the notches in the sides of the receiver. Lift directly up and out of the receiver. See Figure D-10.



Figure D-9: Remove socket screws (both sides)



Figure D-10: Slide the retainer plate forward and lift up and out.

2. The bolt and bolt sled should now be resting in the receiver of the DP-12 and can be removed by reaching in and lifting out the bolt sled as shown in Figure D-11.

Figure D-11: The bolt and bolt sled resting in the receiver.



ALWAYS LEAVE GUN IN OPEN BOLT POSITION

3. With the bolt retainer plate out, slide forend assembly to rear position. Then slide the forend assembly 1/2" to 5/8" forward so that you can see the rear outer corners clear in front of the trigger retainer plate notch. The bolt sled can then be lifted straight up through widest opening in the receiver, See Figure D-12.

Figure D-12: Remove bolt sled

**DO NOT TILT
WHILE LIFTING
BOLT SLED OUT**



4. The 2 separate bolts may then be lifted out of the receiver. To reinstall bolts note that they must be positioned so that the bolt faces are approximately 5/8" forward of the front of the bolt sled at the sled entry and egress locations. The slide arm assembly must also be positioned so the notches engage the bolt sled correctly(See Figure D-11). See Figure D-13.

Figure D-13: Remove
Exposed Bolt from Receiver
**Note that the slidearm
bumps are in their notches
in the bolt sled.**



CAUTION: FURTHER DISASSEMBLY SHOULD ONLY BE PERFORMED BY A CERTIFIED GUNSMITH OR STANDARD MFG. ATTEMPTING FURTHER DISASSEMBLY COULD VOID YOUR WARRANTY.

E. ASSEMBLY

Insertion of the Bolts

1. Cycle the forend completely rearward before attempting to insert the bolts.
2. Insert the bolts rounded side down against the inside top of the receiver with the extractor hooks up towards bottom of the receiver and forward towards the barrels. Position the bolts side by side approximately 5/8" forward of their rearward position. The rear of the extractor hooks should be slightly behind the front edge of the cutout in the receiver for installing and extracting the bolt retainer plate and bolt sled. This cutout jog is in the center of the "U" shaped cutouts in the sides of the receiver for the hammer pivot.
2. Align the notch in the outer forend slide bars so the front edge of the notch is even with the rear of the ejector hooks. See Figure D-13. Hold the bolt sled so the lock bumps are down and the 4 thin legs are rearward, the 2 smooth shallow channels facing towards you. Lower the bolt sled down through the receiver cutout; the sled must be held horizontally so that its sides slide against the inner walls of the cutout in the receiver. See Figure E-2. The slide arm assembly might need to be moved slightly back and forth so that the 3/8" cutout in the sides of the bolt sled capture the rear bumps on the outer slide arms. See Figure E-3. The lock bumps of the sled should fall into the bolts and then moving the forend assembly back and forth should move both bolts and sled back and forth for the full travel. Slide the forend assembly forward so that the sled is captured in the side slots of the receiver.



Figure E-1: Align the cutout



Figure E-2: Lower the bolt sled

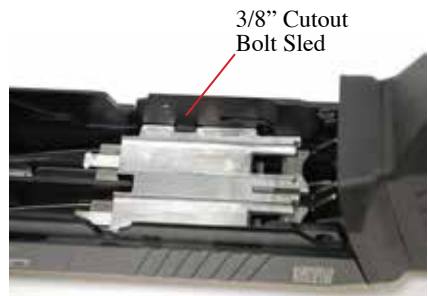


Figure E-3: Move back and forth to capture bumps on the slide arms

3. Hold the bolt retainer plate so the large rectangular bump with threaded holes are facing you and positioned forward towards the barrels. Slide the bolt retainer plate down through the cutout in the receiver just behind the “U” shaped cutouts in the receiver sides. See Figure E-4.

Figure E-4: Slide the bolt retainer plate down through the cutout



Move the bolt retaining plate down and then rearward so that the rear outside corners enter the 1/8” horizontal slots in the receiver sides. The threaded holes should then align with the counter sink holes in the sides of the receiver. Install the #5-40 flat head screws in each side. See Figure E-5



Figure E-5: Install the flat head screws.

LOWER GRIP ATTACHMENT

1. The hammers must be pulled rearward and cocked before installing lower grip assembly. The forend assembly must be forward and bolts closed in breech.
2. Carry out steps 8 through 3 in D. Disassembly: Removal of Lower Grip Assembly.

F. CHOKE TUBES

The DP-12 comes with 2 choke tubes threaded into the muzzle end of each barrel. It is imperative that they be removed and cleaned regularly.

BEFORE REMOVAL OR INSTALLATION OF CHOKE TUBES, MAKE SURE THE FIREARM IS UNLOADED AND THE MUZZLE IS POINTED IN A SAFE DIRECTION.

Removal of Choke Tubes

1. To change or remove the choke tubes, find the wrench that was supplied.
2. Align either stepped end of the tool with the notches in the choke tube as shown in Figure F-1. Turn counter clockwise.



Figure F-1: Turn counter clockwise to remove choke tubes.

Installing Choke Tubes

1. Start new choke tubes into the muzzle with the threaded end entering the barrel first and the 4 notches pointing away from the barrel.
2. Turn clockwise, starting threads by hand.
3. Use supplied tool to tighten.

G. CLEANING AND MAINTENANCE

Maintenance

Your DP-12 is a precision instrument and will provide a lifetime of faithful service if it is properly cleaned and maintained. It is recommended that you clean your DP-12 after every shooting session or more frequently if needed. Be sure to unload your DP-12 (see Unloading on pg. 10) before performing any cleaning or maintenance procedures.

CAUTION: NEVER USE AUTOMOTIVE BRAKE CLEANER OR ANY SOLVENT NOT DESIGNED FOR POLYMER FIREARMS. DOING SO MAY DAMAGE THE FIREARM AND VOID YOUR WARRANTY.

1. Thoroughly clean all exterior sides of the bolt and receiver with solvent and brush.
2. Brush the barrel bore and chamber with a good powder removing solvent and bore brush. Wipe the areas clean with patches or a swab.
3. Using a small brush dipped in solvent, remove all deposits from around the breech of the barrel and barrel extension, as well as all adjacent areas that have been subjected to powder or primer residue.
4. Clean the magazine tubes with solvent and brush if needed.

Lubrication

After cleaning the entire gun, use a cloth to apply a light coating of high quality gun oil to all internal and exterior metal surfaces and wipe clean. If the need arises to lubricate the grip assembly, do so through the top of the assembly. Manually cycle the action back and forth to check the function of the firearm. If any parts are damaged or badly worn or the firearm does not work correctly the firearm should not be fired and should be returned to Standard Mfg. for servicing immediately.

WARNING: DISCHARGING A FIREARM WITH OIL, GREASE, OR ANY OTHER MATERIAL EVEN PARTIALLY OBSTRUCTING THE BORE COULD RESULT IN SERIOUS INJURY OR DEATH AND SERIOUS DAMAGE TO YOUR FIREARM.

H. TROUBLESHOOTING

Proper functioning of your firearm is directly related to proper maintenance and care as well as the quality of ammunition you use. If in the unlikely circumstance your DP-12 malfunctions, we have included a list of several suggested remedies below.

If the DP-12 Fails to Fire: You may be experiencing a misfire and should point the barrel of the DP-12 in a safe direction, engage the safety by ensuring the pointer is selecting “SAFE”, and wait at least 30 seconds before fully cycling the action and ejecting the round. Otherwise, ensure the action is fully forward. The DP-12 is designed to prohibit firing out of battery to protect the user.

Double Feed: A double feed may occur if there is a failure to extract.

Rotate the DP-12 to expose the ejection port and visually examine the malfunction. Depending on the orientation of the rounds, it is usually easiest to push the double-fed shell back into the magazine and cycle the action to clear the shell.

Otherwise, you must manually reach into the ejection port and remove the interfering shell by rotating it around the shell lifters as shown below.



Figure F-1: Clear Double Feed by Rotating Shell Around Lifters

Magazine tube shell hooks will not operate with action in its rearward position. Move the forend assembly forward and raise hooks to empty the magazine tubes.

I. SERVICE, REPAIR, AND WARRANTY

This warranty is granted by Standard Mfg. . This 1 year warranty is effective from the date of purchase and applies to the original owner of a Standard Mfg. firearm. Standard Mfg. firearms are warranted to be free from defects in material and workmanship. Any such defects of which Standard Mfg. receives written notice by the original owner, will be remedied by Standard Mfg. without charge within a reasonable time after such notification and delivery of the product as provided below. If your Standard Mfg. firearm should ever require service or repair please perform the following to ensure fast and reliable service:

- 1) Include a copy of a bill of sale in the owner's name or a copy of ATF Form 4473 indicating date of purchase.
- 2) Include a written copy of the model and serial number of the firearm and a description of the difficulty experienced and service desired.
- 3) Include your name, desired return address, and a number where we can reach you.
- 4) Also include a written list of any accessories in your shipment – Standard Mfg. will not be responsible for any item that was not listed and confirmed by Standard Mfg..
- 5) Be sure the firearm is completely unloaded and the shipping container is free of ammunition. It is against postal and commercial regulations to ship ammunition.
- 6) Securely package your Standard Mfg. firearm and ship (transportation charges pre-paid) to:
Standard Mfg.
Service Department
100 Burritt Street
New Britain, CT 06053

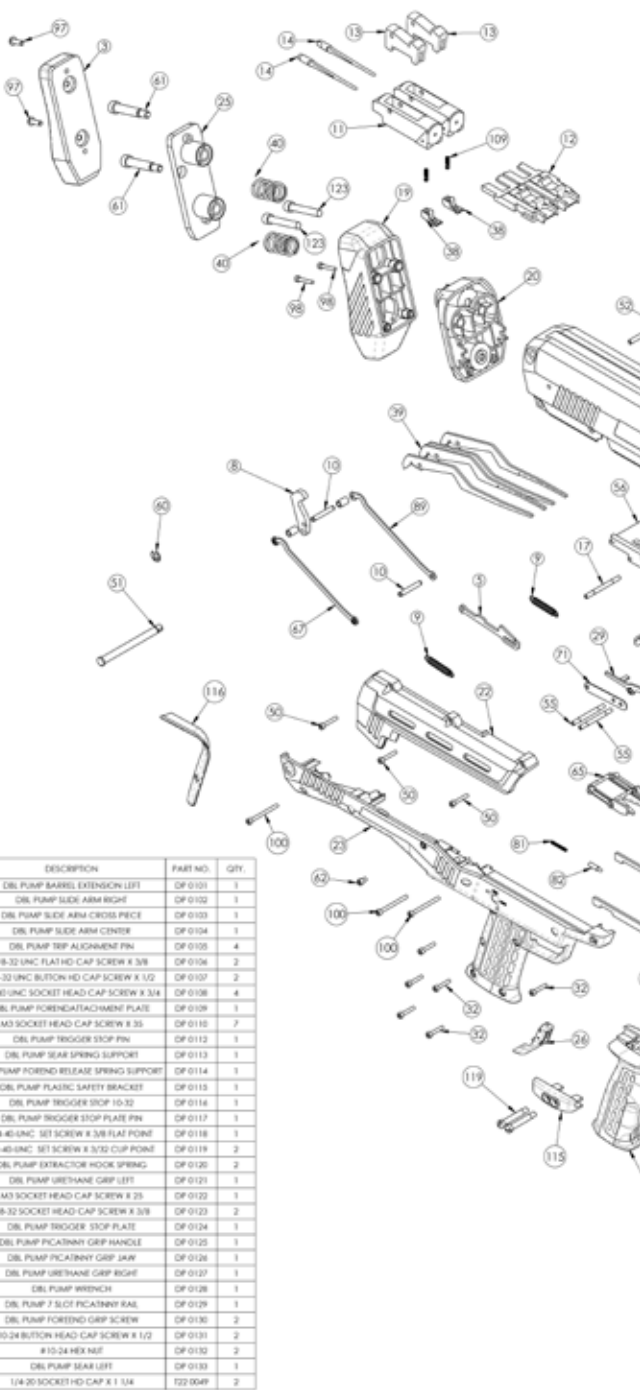
It is recommended that shipments be insured by the owner, since Standard Mfg. will accept no responsibility for loss or damage in transit.

Transportation and insurance charges for return to owner will be paid by Standard Mfg. if the claim is covered by the warranty.

Under no circumstances shall Standard Mfg. be responsible for incidental or consequential damages with respect to economic loss or injury or property damage, whether as a result of breach of express or implied warranty, negligence or otherwise. Some States do not allow the exclusion or limitation of incidental or consequential damages, so the above limitation or exclusion may not apply to you.

Standard Mfg. will not be responsible for defects resulting from careless handling, unauthorized or unsafe adjustments or modifications, non-standard, defective, or improper ammunition, corrosion, neglect, fire damage, water damage, theft, abuse, ordinary wear and tear, or unreasonable use.

ITEM NO.	DESCRIPTION	PART NO.	QTY.
1	DBL PUMP RECEIVER	DP 0001	1
2	DBL PUMP MAG RELEASE PIVOT BLOCK	DP 0002	1
3	DBL PUMP RECOIL PAD	DP 0004	1
4	DBL PUMP MAG TUBE UNION	DP 0005	1
5	DBL PUMP HAMMER TRF RIGHT	DP 0006	1
4	DBL PUMP MAGAZINE SHELL RELEASE	DP 0007	2
7	MAG TUBE SHELL KEEPER	DP 0008	1
8	DBL PUMP HAMMER	DP 0009	2
9	DBL PUMP HAMMER SPRING	DP 0010	4
10	DBL PUMP HAMMER LINK PIN	DP 0012	4
11	DBL PUMP BOLT	DP 0013	1
12	DBL PUMP BOLT SLIDE	DP 0014	1
13	DBL PUMP BOLT LOCK	DP 0015	2
14	DBL PUMP PRING PIN	DP 0016	2
15	DBL PUMP BARREL TUBE LEFT	DP 0017	1
16	DBL PUMP HAMMER TRF LEFT	DP 0018	1
17	DBL PUMP HAMMER MAIN SPRING PIN	DP 0019	1
18	DBL PUMP HOUSING LEFT OF NYLON	DP 0017CM	1
19	DBL PUMP PAD SHROUD	DP 0020	1
20	DBL PUMP STOCK SUPPORT	DP 0023	1
21	DBL PUMP TRIGGER	DP 0024	1
22	DBL PUMP RIGHT SHROUD	DP 0025	1
23	DBL PUMP HOUSING RIGHT OF NYLON	DP 0017CM	1
24	DBL PUMP LEFT SHROUD	DP 0028	1
25	DBL PUMP RECOIL PLATE	DP 0029	1
26	DBL PUMP RELEASE BUTTON	DP 0030	1
27	DBL PUMP FOREND LEFT	DP 0031	1
28	DBL PUMP FOREND RIGHT	DP 0032	1
29	DBL PUMP SEAR RIGHT	DP 0033	1
30	MAG KEEPER RELEASE BAR	DP 0034	1
31	DBL PUMP RELEASE BAR POSITION SPRING	DP 0035	1
32	M3 SOCKET HEAD CAP SCREW X 1/4	DP 0036	9
33	DBL PUMP BARREL TUBE RIGHT	DP 0037	1
34	DBL PUMP NOZZLE SUPPORT	DP 0038	1
35	DBL PUMP FOREND RELEASE	DP 0039	1
36	DBL PUMP TRIGGER RETURN SPRING	DP 0040	1
37	PCATINNY RAIL	DP 0042	1
38	DBL PUMP EXTRACTOR	DP 0043	2
39	DBL PUMP LFTER	DP 0044	2
40	DBL PUMP RECOIL SPRING	DP 0045	2
41	DBL PUMP MAG TUBE	DP 0050	2
42	DBL PUMP BARREL NUT	DP 0051	2
43	DBL PUMP MAG THREADED END	DP 0052	2
44	DBL PUMP BARREL HOLD BOLT	DP 0053	2
45	DBL PUMP TOP RAIL	DP 0054	1
46	DBL PUMP MAG SPRING	DP 0055	2
47	MAGAZINE TUBE PLUNGER	DP 0056	2
48	DBL PUMP SLIDE ARM LEFT	DP 0057	1
49	DBL PUMP FOREND BRACKET	DP 0058	1
50	M3 SOCKET HEAD CAP SCREW X 1/8	DP 0059	3
51	QUICK PIN CLEVIS	DP 0060	1
52	DBL PUMP HAMMER PIVOT PIN	DP 0061	1
53	DBL PUMP HAMMER LINK DIVIDER	DP 0062	1
54	MAG TUBE RELEASE PIVOT PIN	DP 0063	1
55	DBL PUMP TRIGGER/SEAR PIN	DP 0064	2
56	DBL PUMP BOLT PLATE	DP 0065	1
57	DBL PUMP TRIGGER RETURN SPRING PIN	DP 0066	1
58	MAG TUBE HOOK RELEASE V SPRING	DP 0067	1
59	#8-32 BUTTON HEAD CAP SCREW X 3/8	DP 0068	4
60	ECLIP	DP 0069	1
61	1/4-20 X .3125 SHOULDER SCREW	DP 0070	2
62	#8-32 SOCKET HEAD CAP SCREW	DP 0071	2
63	MOTHER NUT SELF LOCKING	DP 0072	2
64	DBL PUMP REST/RELEASE PIN	DP 0073	2
65	DBL PUMP ALIGNMENT SLOT LEFT	DP 0074	1
66	DBL PUMP TRIGGER ROLL PIN LONG .042	DP 0076	1
67	DBL PUMP HAMMER LINK RIGHT	DP 0077	1
68	#8-32 BUTTON HEAD CAP SCREW X 1/4	DP 0078	2
69	#8-32 LOW HD SOCKET CAP SCREW	DP 0079	4
70	DBL PUMP TRIGGER RESET RIGHT	DP 0080	1
71	DBL PUMP ALIGNMENT PIN PLATE	DP 0081	2
72	DBL PUMP SELECTOR BAR	DP 0082	1
73	DBL PUMP SELECTOR BAR SPRING	DP 0083	1
74	DBL PUMP TRIGGER SELECTOR BAR PIN	DP 0084	1
75	DBL PUMP TRIGGER ROLL PIN SMALL	DP 0085	1
76	DBL PUMP CARRIER PIVOT PIN	DP 0086	1
77	DBL PUMP HAMMER SPACERS	DP 0087	4
78	DBL PUMP ADJUST PLATE	DP 0088	1
79	DBL PUMP SAFETY BUTTON	DP 0089	1
80	DBL PUMP SAFETY END CAP	DP 0090	2
81	DBL PUMP SAFETY DETENT SPRING	DP 0091	2
82	DBL PUMP SAFETY DETENT PLUNGER	DP 0092	2
83	DBL PUMP RELEASE HOOK SPRING 2	DP 0093	3
84	DBL PUMP SEAR SPRING	DP 0094	2
85	DBL PUMP FOREND RELEASE SPRING	DP 0095	1
86	DBL PUMP RESET SPRING	DP 0096	1
87	SPR ROLL PIN .25 X .0425	DP 0097	3
88	DBL PUMP TRIGGER RESET LEFT	DP 0098	1
89	DBL PUMP HAMMER LINK LEFT	DP 0099	2
90	DBL PUMP BARREL EXTENSION RIGHT	DP 0100	1





**READ THE INSTRUCTIONS AND
WARNINGS IN THIS MANUAL CAREFULLY
BEFORE USING THIS FIREARM**

**For Product Service on This Model Please Email:
service@standardmfgllc.com**

**THIS INSTRUCTION MANUAL SHOULD ALWAYS ACCOMPANY THIS
FIREARM AND BE TRANSFERRED WITH IT UPON CHANGE OF
OWNERSHIP, OR WHEN THE FIREARM IS LOANED OR PRESENTED TO
ANOTHER PERSON**